

## BRUSH REPLACEMENT PROCEDURE FOR LAMB VACUUM MOTOR 116758-13

- 1) DISCONNECT POWER TO THE MOTOR.
- 2) BEND THE CLIPS AWAY FROM THE HOUSING WITH A PAIR OF PLIERS.
- 3) USING A FLAT SCREW DRIVER, PUT THE BLADE BETWEEN THE HOUSING AND THE COMM END BRACKET. APPLY A SMALL AMOUNT OF PRESSURE. WITH A SECOND SCREW DRIVER, PRY THE FINGERS ON THE HOUSING OUT SLIGHTLY FROM THE BUSH MECHANISM. DO THE SAME TO THE OTHER SIDE.
- 4) PRY STRAIT UP WITH THE SCREW DRIVER TO AND PULL WITH THE OTHER HAND UNTIL THE HOUSING PULLS OFF THE COMM BRACKET.
- 5) BEND THE CLIPS BACK TO ITS ORIGINAL POSITION.
- 6) REMOVE THE 2 SCREWS HOLDING THE CLIP, AND PULL THE BRUSH ASSEMBLY AWAY FROM THE MOTOR.
- 7) WITH A SMALL FLAT SCREW DRIVER, PRY THE WIRE CLIP OUT OF THE TOP OF THE BRUSH HOLDER, THEN PULL IT STRAIGHT OUT WITH A PAIR OF PLIERS.
- 8) PUSH THE WIRE CLIP INTO THE TOP OF THE NEW BRUSH HOLDER.
- 9) REPLACE THE BRUSH ASSEMBLY TO ITS NORMAL POSITION AND SCREW THE CLIP BACK INTO PLACE.
- 10) REPEAT STEPS 6 THRU 9 ON THE OTHER BRUSH.
- 11) PUSH THE HOUSING BACK INTO PLACE. MAKE SURE TO LINE UP THE PINS ON THE HOUSING WITH THE TUBES ON THE COMM BRACKET.

# PARTS BULLETIN

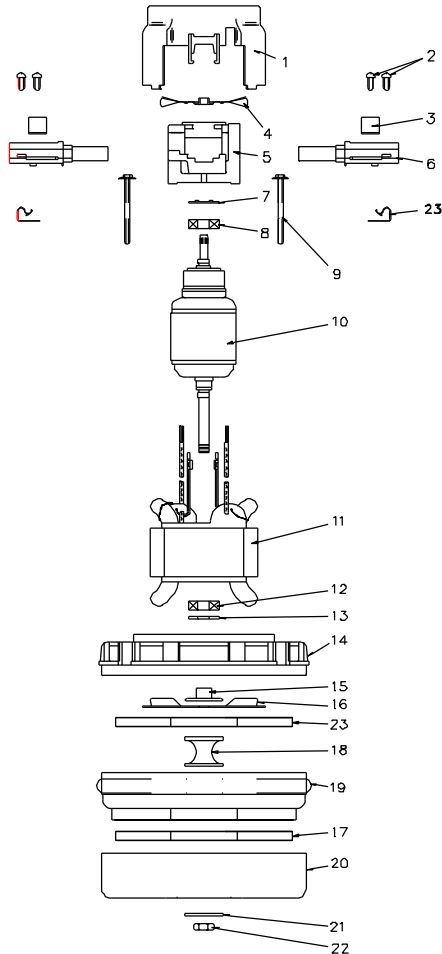
**AMETEK**  
LAMB ELECTRIC DIVISION

MODEL NO.  
**116758-13**

ISSUED: January 1995  
REVISED: July 2001

5.7"/145mm DIAMETER, 120V, 2-STAGE, QUIET BY-PASS, BALL/BALL, PERIPHERAL DISCHARGE, AIR SEAL AND EPOXY

## PARTS LIST



DESCRIPTION	REQUIRED	PART NO.
1 HOUSING	1	60-3776-4
2 SCREW	4	50-7971
3 CLAMP	2	10-5477
4 FAN	1	0-3930-1
5 COMM END BRACKET	1	20-6581
6 BRUSH MECHANISM	2	33326-1
7 LOAD SPRING	1	10-3543
8 BALL BEARING	1	70-7613-2
9 SCREW	2	60-7952-3
10 ARMATURE	1	216207-00
11 FIELD	1	315737-1
12 BALL BEARING	1	70-7619-2
13 NEOPRENE WASHER	1	10-2480
14 FAN END BRACKET	1	44338
15 SPACER	1	30-2942
16 FAN	1	0-3939-1
17 ROTATING FAN	1	31120-4
18 SPACER	1	10-2977-1
19 STATIONARY FAN	1	31340
20 ROTATING FAN	1	31120
21 FAN SHELL	1	60-3727-14
22 WASHER	1	40-2207
23 NUT	1	7491
24 CLIP	2	20-5110

*PART SUBJECT TO CHANGE WITHOUT NOTICE.*

*THIS INFORMATION IS FOR PART IDENTITY ONLY,  
IT IS NOT TO BE USED AS DISASSEMBLY OR  
ASSEMBLY INSTRUCTIONS.*

*REPLACEMENT OF ARMATURE OR FIELD REQUIRES  
THE REPLACEMENT OF BRUSH MECHANISM.*

AMETEK/LAMB ELECTRIC DIVISION  
627 LAKE STREET, KENT, OHIO 44240  
TELEPHONE: (330) 673-3451; FAX: (330) 673-8994